



November 2015

APODC Update



Auckland Parents of Deaf Children Inc., P.O. Box 202001, Southgate, Takanini, Auckland 2246.

Text/Ph: 022 084 2244

Email: apodc@orcon.net.nz

Website: www.apodc.org.nz

Facebook: <https://www.facebook.com/groups/981153361914892/?ref=ts&fref=ts>

APODC FAMILY CAMP 2015 – AWESOME!

What happens when you put together 18 APODC families, 10 families with CODA, interpreters, interpreting students, volunteers, a weekend of glorious weather and bunk them all down at Camp Raglan? You get a whole lot of **wonderful!**



What did you enjoy the most about Camp Raglan?

- DEAF DEAF WORLD.
- Making new friends.
- Flying fox.
- Confidence Course & Climbing Wall.
- The view.
- The food – better than at home.
- Air Rifles.
- Meeting up with old friends.
- Archery.
- Learning some NZSL.
- Thrills (and spills) on the BMX bikes.
- No one is different here.
- The secret pathway to the activities.
- Incredible community experience.
- Gorgeous weather!
- It was fun meeting other people who are deaf & hearing impaired.

The APODC family camp was made affordable for families through grants, donations, resources and time gifted by volunteers. The APODC management committee are grateful for the generous support of the following organisations:

CONNECT INTERPRETING **QUOTA INTERNATIONAL**
NEW ZEALAND FEDERATION FOR DEAF CHILDREN (NZFDC)
DEAF DEVELOPMENT FUND and **LIONS FOUNDATION**

Last event for 2015...

APODC Christmas Party!

2016 can wait. Time to wring out the last of 2015 with old friends, new faces and some good old-fashioned fun. Join with APODC families at our last hurrah for the year...

You're invited !

Get your family's name down for the APODC Christmas party.

WHERE? YMCA Mt Albert Community and Leisure Centre, 773 New North Road, Mt Albert (behind Rocket Park)

WHEN? SUNDAY 6th December

TIME? 11.30 a.m. - 1.30 pm

Email/text/phone with your name and how many of your family are attending.

Contact Chris on apodc@orcon.net.nz or 022 084 2244.

Games for all ages

Gymnastic equipment

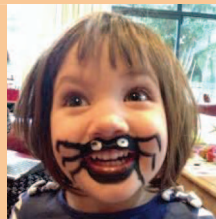
Food

Face painting

Balloons

Awesome raffles

2016 Early membership prize draw



Catch up with your APODC friends, meet some new families or just chill out and watch the kids enjoy themselves.

Pay your 2016 APODC membership fee at the door, or before December 6th through the usual channels and go in the draw for a fabulous prize. Drawn at this event.



Join APODC on Facebook.

The Auckland Parents of Deaf Children Facebook page is another way to connect with other parents and families, share ideas and learn what's happening in APODC and the Deaf world!

<https://www.facebook.com/groups/981153361914892/?ref=ts&fref=ts>

Join the APODC Facebook group today and load your photos of **CAMP RAGLAN** to share with the new friends you made!

It's time to pay 2016 membership fees

A \$20 financial membership for families with a deaf or hearing-impaired child entitles the whole family to benefits like **FREE** events for 2016.

Internet banking: Deposit \$20 into our ASB account: Auckland Parents of Deaf Children Inc. 12-3011-0757651-00 (Use your family name and 2016 as a reference.)

Send a cheque for \$20.00 made out to **Auckland Parents of Deaf Children Inc.**

Post to: APODC Inc., P.O. Box 202001, Southgate, Takanini, Auckland 2246.

Pay cash: Deposit \$20 at the closest ASB branch. Deposit into our account: Auckland Parents of Deaf Children Inc. 12-3011-0757651-00 (Use your initial and surname as a reference.)

In person, at our Christmas Party: Join up at our Christmas event on 6th December and go in the draw for our 2016 Earlybird membership prize!

I don't have a deaf or hearing-impaired child but I want to be involved with APODC.

Can I join too?

Anyone can join APODC as an **ASSOCIATE MEMBER.**

For \$20 per year, an Associate Member and their family has access to the APODC newsletter and can join in events every month with APODC families.

Events are only free for families with a deaf or hearing-impaired child. Due to the grants we source, we cannot give free access to Associate Members. However many events are available at a discounted rate for Associate Members and their families.

Please join us!

We welcome Associate Members to APODC.





AUCKLAND DEAF
SOCIETY INC



INTRODUCING OUR NEW COURSE
RUN BY THE SIGN LANGUAGE HUB WITHIN
AUCKLAND DEAF SOCIETY.

24 WEEK COURSE

SATURDAY 6 FEBRUARY 2016 UNTIL
10TH DECEMBER 2016

Classes every two weeks on a Saturday
afternoon from 2pm to 4pm.

'NZSL for Families' is a course that serves as a point of contact for families wanting to know more about NZSL. It provides a family friendly environment with age-appropriate activities for both children and adults in a signing environment.

All those who attend have the chance to learn, while taking part in activities that suit both Deaf and hearing family members in a relaxed and fun atmosphere.

Different topics are covered each session and they include the vocabulary required for everyday situations in family life.

**THE COURSE IS FACILITATED BY
TWO EXPERIENCED NZSL TUTORS.**

There will be variety of hands-on activities available for children including:

- Traffic Lights
- Chinese whispers
- Guess what I am doing?
- Command cards

With the children happily engaged, parents and other family members will learn NZSL in an adult group. Adults activities suit both Deaf and hearing and are accessible and culturally appropriate. This will provide interaction between hearing, Deaf and other NZSL users, allowing all to practice their NZSL skills.

THIS COURSE IS FOR:

- Deaf children
- Children of Deaf Adults (CODA)
- Siblings of Deaf brothers/sisters
- Children of Deaf grandparents
- Children of NZSL interpreters
- Deaf adults of CODA children
- Relatives of deaf children
- Anyone who is simply interested in learning NZSL in a family environment.

This course is suitable for children aged 5 to 12.

**THIS COURSE IS
AVAILABLE AT NO COST**
THANKS TO FUNDING FROM THE
NZSL BOARD

REGISTRATIONS CLOSE: 1ST FEBRUARY 2016
TO REGISTER GO TO www.auckland-deaf.org.nz

FOR MORE INFORMATION CONTACT:

Victoria Lessing - NZSL Development Specialist | EMAIL: nzsl@auckland-deaf.org.nz
PHONE: +64 9 630 6980 | FAX: +64 9 630 6934 | ADDRESS: 164 Balmoral Road, Balmoral, Auckland, 1024

For your calendar...

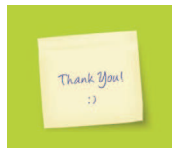
Contact us:

Email: apodc@orcon.net.nz

Phone or text: 022 0842244

Website: www.apodc.org.nz

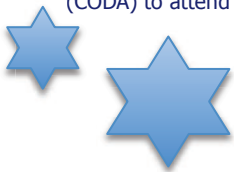
<p>Sunday 6th December 11.30 am - 1.30 pm</p> <p>APODC Christmas Party.</p> <p>Come and join our end of year Family Fun event</p>	<p>APODC Christmas Party at YMCA Mt Albert Community & Leisure Centre, 773 New North Rd, MT ALBERT.</p> <p>Meet up with your friends from camp or make some new ones as we mark the end of another successful APODC year.</p> <p>Food, fun, festivity, games, raffles, face-painting and more.</p> <p><i>Be in with a chance to win the earlybird membership draw! Pay your 2016 membership fee as an APODC Family Member or Associate Member at this event and be in the draw for a FABULOUS prize. The winner will be drawn at this event. Gotta be in to WIN!!</i></p>
<p>Saturday 6th February – 10th December 2016.</p>	<p>NZSL for Families</p> <p>Classes run from 2 – 4 p.m. at the Deaf Society Clubrooms, 164 Balmoral Rd, AUCKLAND.</p> <p>Make the most of this amazing opportunity to take part in a free 24 week course run by the sign language hub of the Auckland Deaf Society. For anyone interested in learning NZSL in a family friendly environment. Suitable for children 5-12 and adults.</p> <p>Contact Victoria Lessing at nzsl@auckland-deaf.org.nz for more details .</p>



A big **THANK YOU** to all the following sponsors for your support throughout 2015. You have made it possible for APODC to provide the services that bring families of deaf and hearing-impaired children together. Every family has benefitted and we offer our heartfelt appreciation for your generosity.

COGS Manukau, COGS Auckland, COGS Waitakere, COGS North Shore/Rodney, Penny Went NZSL Award, Connect Interpreting, Quota International, New Zealand Federation for Deaf Children and Lions Foundation.

Specific thanks go to the **Deaf Development Fund**, who made it possible for Deaf parents with hearing children (CODA) to attend the 2015 APODC family camp.



Who needs parents when you've got mates?
The kids enjoy a breakfast free of grown-ups at APODC's family camp, Raglan, November 2015.